

# PA magneticValves: PA150, PA500, PA150NS, PA500NS

## Purpose

Flow rate control valve for steel shot media and cut wire for peening and blasting.



with sensor

3rd. Generation Technology



NS: no sensor



## Model

- PA150 magneticValve: Range 15-150 kg/min
- PA150NS magneticValve: Range 15-150 kg/min
- PA500 magneticValve: Range 50-500 kg/min
- PA500NS magneticValve: Range 50-500 kg/min

## Features

Features with sensor	Features NS version – no sensor
<ul style="list-style-type: none"> <li>• ±10% accuracy on set point</li> <li>• Power off: valve closed</li> <li>• No moving parts for low-maintenance operation</li> <li>• Meets AMS 2432 Rev E specifications</li> <li>• Digital signal: no data transmission lost</li> <li>• 3 Operating Modes:                             <ul style="list-style-type: none"> <li>- HMI Control,</li> <li>- FlowMaster Control,</li> <li>- Analog and Digital IO Connection</li> </ul> </li> <li>• Anti-leakage protection (if disconnected to FlowMaster)</li> <li>• Includes a 1-meter plug and cable (option 0.5, 5 and 10m)</li> <li>• Constant Voltage and Constant Current DC Power Supply</li> <li>• CE compliant</li> <li>• Patent pending</li> </ul>	<ul style="list-style-type: none"> <li>• Power off: valve closed</li> <li>• No moving parts for low-maintenance operation</li> <li>• Digital signal: no data transmission lost</li> <li>• 3 Operating Modes:                             <ul style="list-style-type: none"> <li>- HMI Control,</li> <li>- FlowMaster Control,</li> <li>- Analog and Digital IO Connection</li> </ul> </li> <li>• Anti-leakage protection (if disconnected to FlowMaster)</li> <li>• Includes a 1-meter plug and cable (option 0.5, 5 and 10m)</li> <li>• Constant Voltage and Constant Current DC Power Supply</li> <li>• CE compliant</li> <li>• Patent pending</li> </ul>

## Description

The unit is a precision control valve that regulates media in Wheel Shot Peening machines. The valve has a built-in flow sensor that is able to provide closed loop feedback to the shot flow processor. The shot flow processor is a high end processing device which regulates the media flow rate with auto tune technology.

When connected to the PA FlowMaster, the configuration of the PA magneticValve can be retrieved and manipulated by the users for their desired applications. The equipment can be operated in two modes – manual mode or auto mode. Manual mode allows users to control the valve with constant flow rate, while auto mode enables auto tune technology to regulate the flow rate.

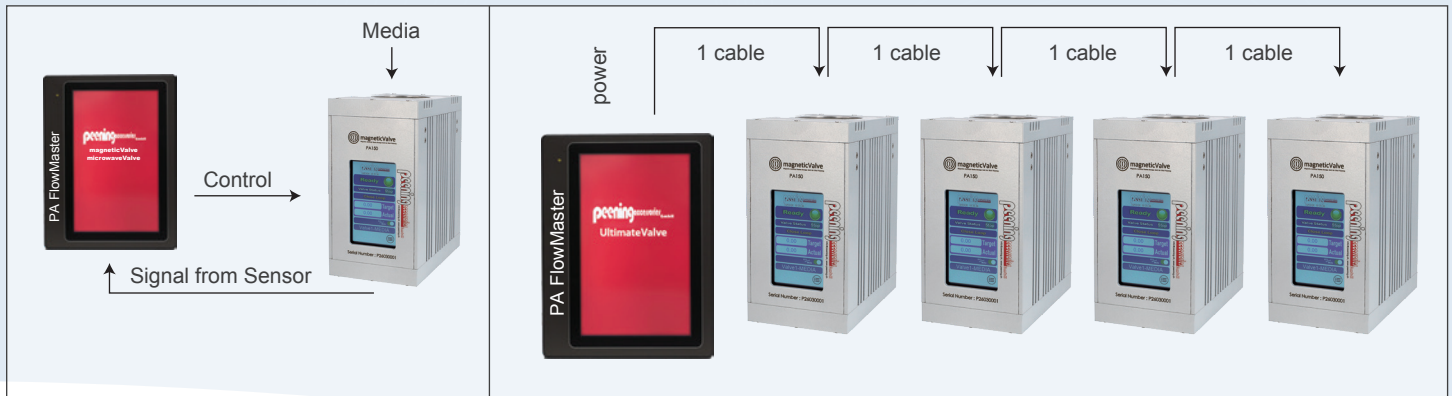
The PA magneticValve complies with AMS 2432 Rev E and other technical requirements. The valve has no moving parts, which ensures a low maintenance operation.



Contact the official distributor at:  
Peening Accessories GmbH  
Frohbergstr. 38, 8620 Wetzikon Switzerland

 [www.peening.ch](http://www.peening.ch)

 [info@peening.ch](mailto:info@peening.ch)



Closed loop system using PA FlowMaster (sold separately) and PA magneticValve

Easy plug & play system with a minimum of cables. Valves connect in serial order. Terminating connector for RS485 communication.

## Price

PA150 magneticValve (FlowMaster sold separately)	Ref. No. 822 204	Price on request
PA150NS magneticValve (FlowMaster sold separately)	Ref. No. 822 205	Price on request
PA500 magneticValve (FlowMaster sold separately)	Ref. No. 822 206	Price on request
PA500NS magneticValve (FlowMaster sold separately)	Ref. No. 822 207	Price on request
Recalibration for 1 valve	Ref. No. 822 900-R	Price on request

## PA FlowMaster (sold separately)

	Power	24 Vdc @ 0.5 A
	Analog input	0 – 10 Vdc
	Flow recording output	0 – 10 Vdc
	Flow enable output	24 Vdc @ 10 mA
	Temperature range	32 – 122 ° F (0 – 50 ° C)
	Dimensions	188mm (W) x 143mm (H) x 90mm (D)
	Display touchscreen	7"
	Functions	Flow rate display: Up to 4 valves! <b>Substantial cost savings if more than one valve is in use.</b>
		Valve status
		Standard configuration 6 languages: English, Spanish, French, German Chinese Simplified, Japanese. Other languages on request.
Up to 64 peening data recipes		
Configuration		
Alarm system		



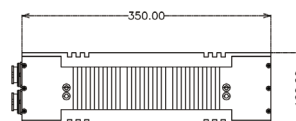
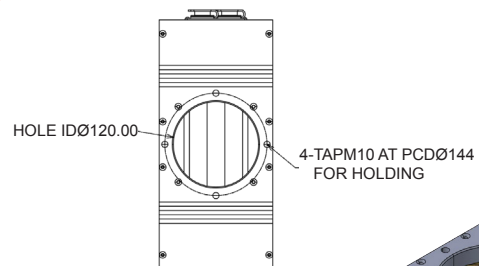
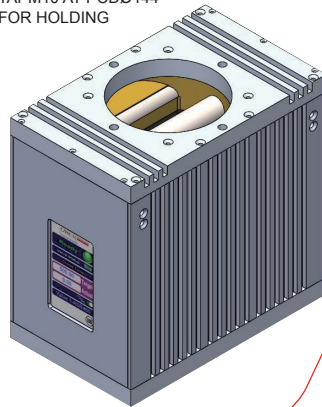
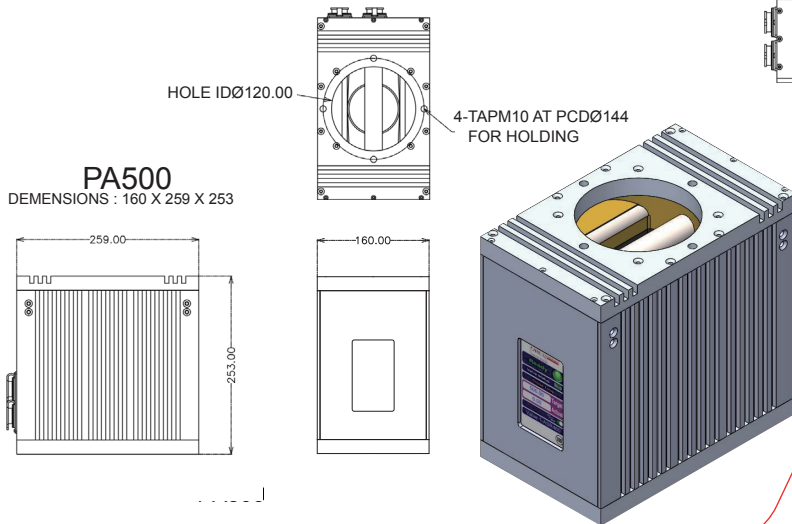
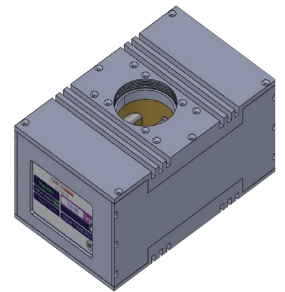
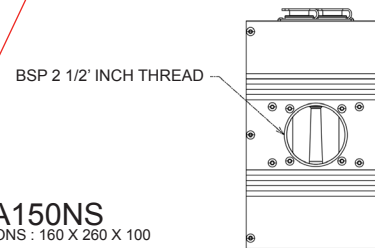
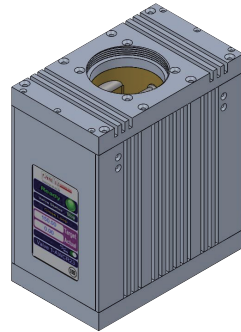
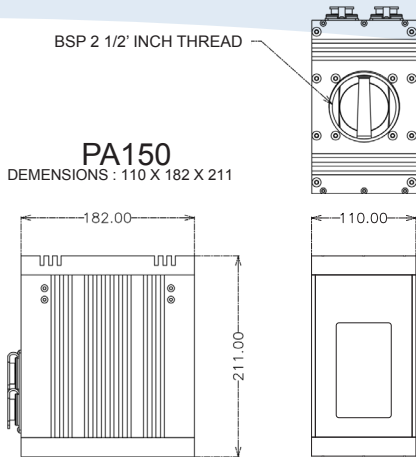
Contact the official distributor at:  
Peening Accessories GmbH  
Frohbergstr. 38, 8620 Wetzikon Switzerland

[www.peening.ch](http://www.peening.ch)

[info@peening.ch](mailto:info@peening.ch)

## Specifications

Power	24 Vdc @ 2A (50 VA); 110 - 240 Vac @ . 2A per Valve
Media	Ferrous media except cast stainless steel
Mode	Manual/Auto
Temperature range	5° – 48 ° C (40 ° – 110 ° F )
Analog input	0 – 10 Vdc
Valve ON signal supply	24 Vdc
Flow sensor output	0 – 10 Vdc



**peening** accessories GmbH

Contact the official distributor at:  
Peening Accessories GmbH  
Frohbergstr. 38, 8620 Wetzikon Switzerland

 [www.peening.ch](http://www.peening.ch)

 [info@peening.ch](mailto:info@peening.ch)